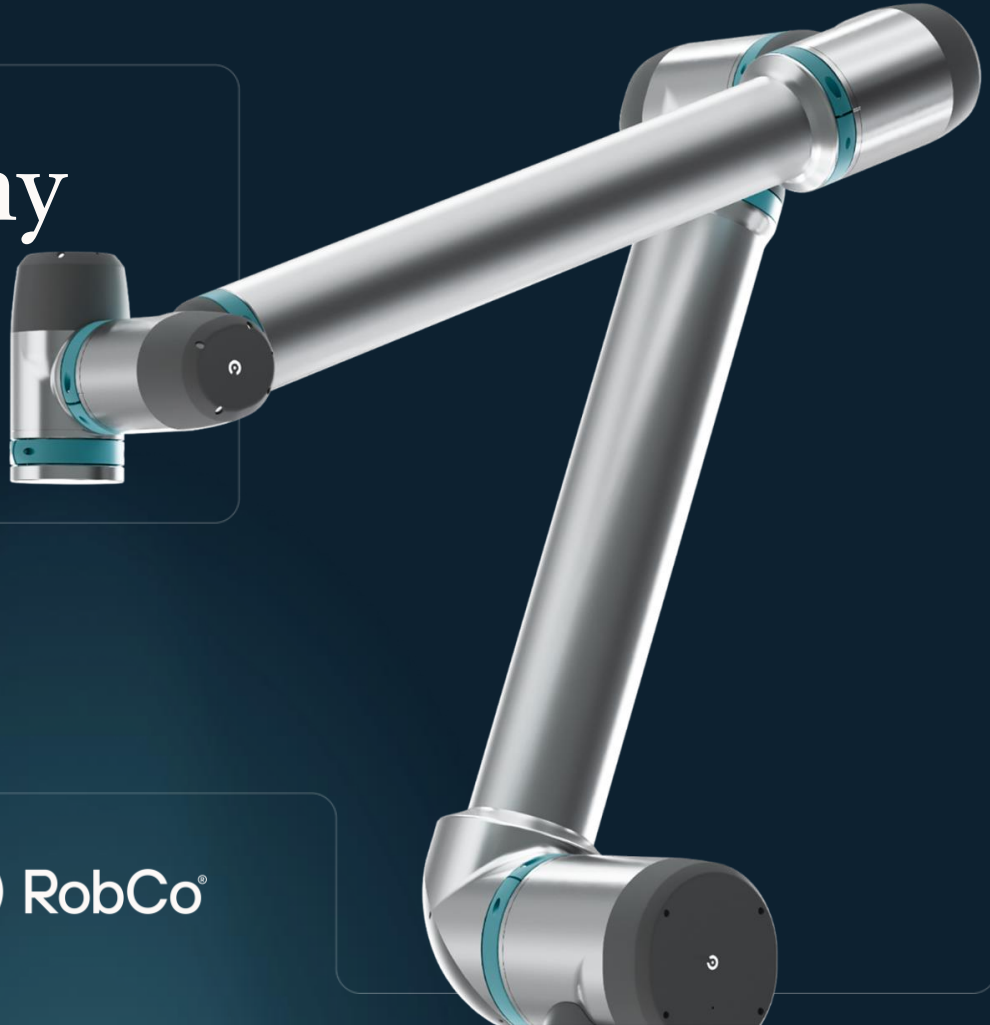
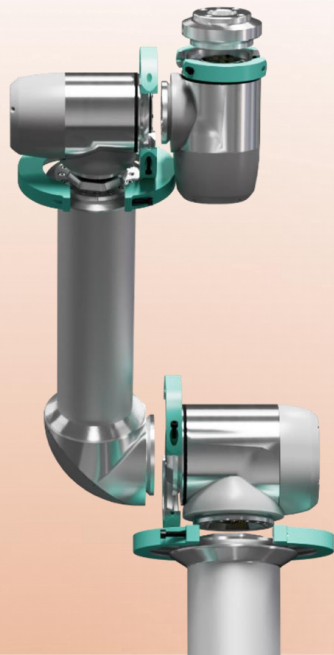


The Robot Company
that is centered on
software and AI



In the future,
everything that moves will be robotic



Automate the **ordinary**,
so humans can do the **extraordinary**

Automation Readiness Index

Comparing *Germany* and *USA*

Automation Readiness Index

USA: 400 decision-makers across construction, manufacturing, healthcare

Germany: 250 decision-makers across manufacturing, automotive, food & logistics

Business Size

US

Germany

44%

Less than 250

24%

Less than 250

29%

250-999

18%

250-999

28%

1,000+

58%

1,000+

Top 3 - Business Sector

US

Germany

25%

Construction /
Engineering

36 %

Manufacturing

14%

Manufacturing

34 %

Automotive

13%

Healthcare &
Pharmaceuticals

30%

Food Industry

Germany = production-driven, USA = more sector diversity

Workforce Challenges: Both countries see workforce as the bottleneck



3.8M

Additional
manufacturing
roles needed by
2033 in the US

52%

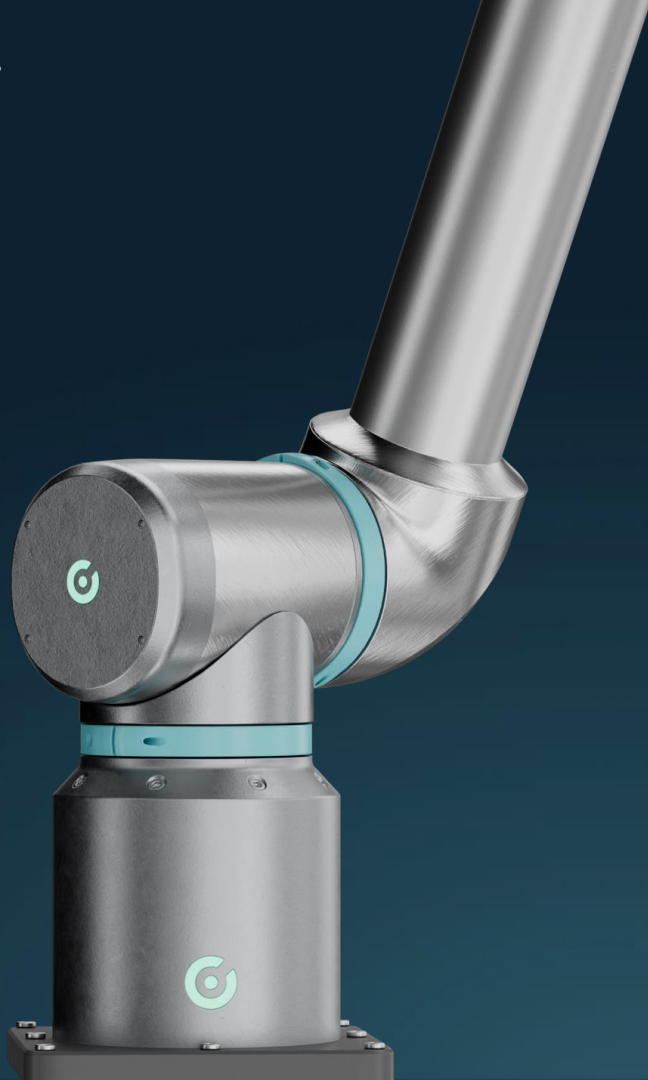
cite skilled labor
shortage in Germany

1.9M

risk remaining
unfilled in the US

50%

highlight economic
uncertainty in Germany



Automation is a solution, not a threat.

73%

of the workforce open to
automation in the US.

64%

workforce positive
toward automation in Germany.

Germany further ahead in adoption, US preparing to scale

Only
33%
using robotics
today in the US

48%
currently use
robots in Germany

44%
Testing or
planning in the US

26%
in testing phase
in Germany



Cost is the #1 barrier for US

48%

Cite high investment costs as biggest barrier to automation.

42%

Considering RaaS payment model.

Companies want automation, but not the old CapEx model.

Cost is the #1 barrier in Germany

49%
cite high
investment costs

29%
No suitable
use case identified

Companies want automation,
but face cost and resource hurdles.

**Factories
lack the
know-how,
but RobCo is
the answer.**

27%

Cite lack of internal know-how,
both in the US and Germany.

81%

In the US expect further
automation challenges in the
years ahead.


66%

expect additional
challenges in the coming
years in Germany

**No-code.
Easy-to-manage
robotics.**

- ✓ **Both:** Strong intent to automate, but barriers remain (cost & skills gap)
- ✓ **USA:** Adoption driven by incentives, reshoring, and labor shortage
- ✓ **Germany:** Focus on efficiency and cost, higher maturity, large enterprise dominance
- ✓ **RaaS** removes cost and complexity barriers — making automation accessible, scalable, and future-proof in both markets
- ✓ Our time is now.

Robotics-as-a-Service breaks down barriers



Pay only
when robots
are running.

Fast
deployment

(3 months vs 9
industry norm)

RobCo is a
one-stop-shop.

End-to-end simplicity.

RobCo - The Robot Company that is centered on software and AI

Centered on software & AI

- Every solution is based on a digital twin of robot and environment
- Fast and simple connection to other machines and existing software
- Cloud-based remote access, maintenance, and over-the-air-updates

1

Unmatched modularity & performance

- Most adaptable robot system solution on the market
- Broad capabilities to perform all use cases up to 40 kg or 2.5 m
- High precision with a repeatable accuracy of less than 0.1 mm

2

Superior value across top & bottom line

- Improved productivity on shop floor to boost topline by up to 3x
- Fastest-to-ROI at transparent pricing with Robots-as-a-Service
- Full transparency with leading machine & software connectivity

3

Unique distribution & deployment motion

- The most customer-driven robot system solution on the market
- Bundling software & hardware integration – no intermediaries
- Fastest to deploy and redeploy, even under changing circumstances

4



Footprint

With a presence in Europe and the US,
we have deployed hundreds of robots in 10+ countries



Our mission
RobCo in every factory



T Systems

Rosenberger

Fraunhofer

LINAMAR

wodewa[®]
Made in Germany | 100% with Recycled

MCW
systemtechnik

Kaspar
LÜTHER

BEMPFLINGER

SCHAEFFLER

KUMOVIS

FRANK
PRÄZISIONSTEILE GMBH

KTS GmbH & Co. KG
Technologiepark Stahl

RIBE[®]

LASER
COMPONENTS[®]

adhesive
solutions
WE WERE THERE FOR YOU FIRST

DE-VAU-GE

KIESELMANN
FLUID PROCESS GROUP

deCrignis
Formvollendete Bleche und Gehäuse

BorgWarner

GBN
SYSTEMS

eldec

ennepe
Metalleisenhandel | GmbH

ROHDE & SCHWARZ

Increase in production capacity and quality at Rosenberger

Rosenberger Hochfrequenztechnik GmbH & Co. KG is a provider of connectivity solutions in high-frequency, fiber optic and high-voltage technology and employs more than 14,800 people in over 17 countries worldwide

Automation Goal

Increasing production capacity, quality and reducing the error rate. Mobile system cell for flexible deburring and engraving of components



Why RobCo

Flexibility of the robot, simple programming and quick changeover. Fast service thanks to proximity to the customer

Solution

2x 6-axis robot configuration, 1.3 m reach, 11.5 kg payload capacity

Benefits

- Efficiency gains, greater flexibility for Rosenberger's customers, shorter response times