

OMRON

Get Together for robotics

José Manuel Cano

EMEA Robotics Regional Manager



OMRON

CONTEXT - OMRON Robotics Technologies

- Headquarters: Pleasanton, CA, USA
- Founded as Adept Robotics in 1983
- Introduced first mobile robot in 2008
- Acquired by OMRON in 2015



25,000+

Robots Deployed



40+

Years of Robotics
Experience



100+

Global Sales
Locations



CONTEXT - OMRON Robotics Portfolio



Autonomous Mobile Robots



Industrial Robots



Collaborative Robots

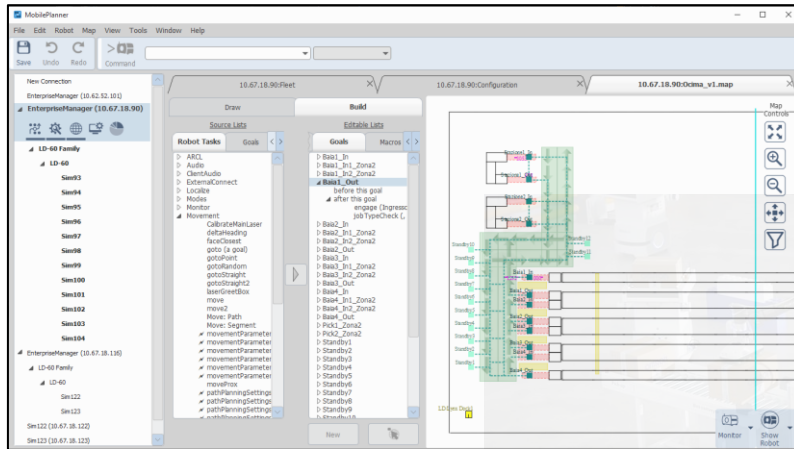


TODAY

highlighting 2 interesting trends

Highlighting two interesting trends

Trend 1: Software/IT over hardware

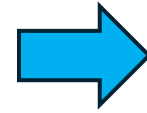


Trend 2: Mobile Manipulation

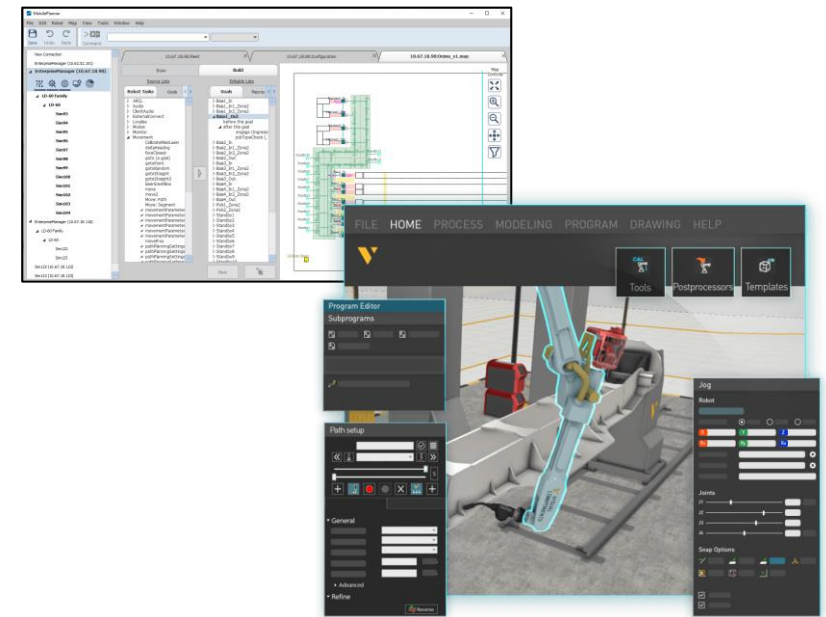


Trend 1: Software/IT over hardware

Hardware increasingly becomes a commodity



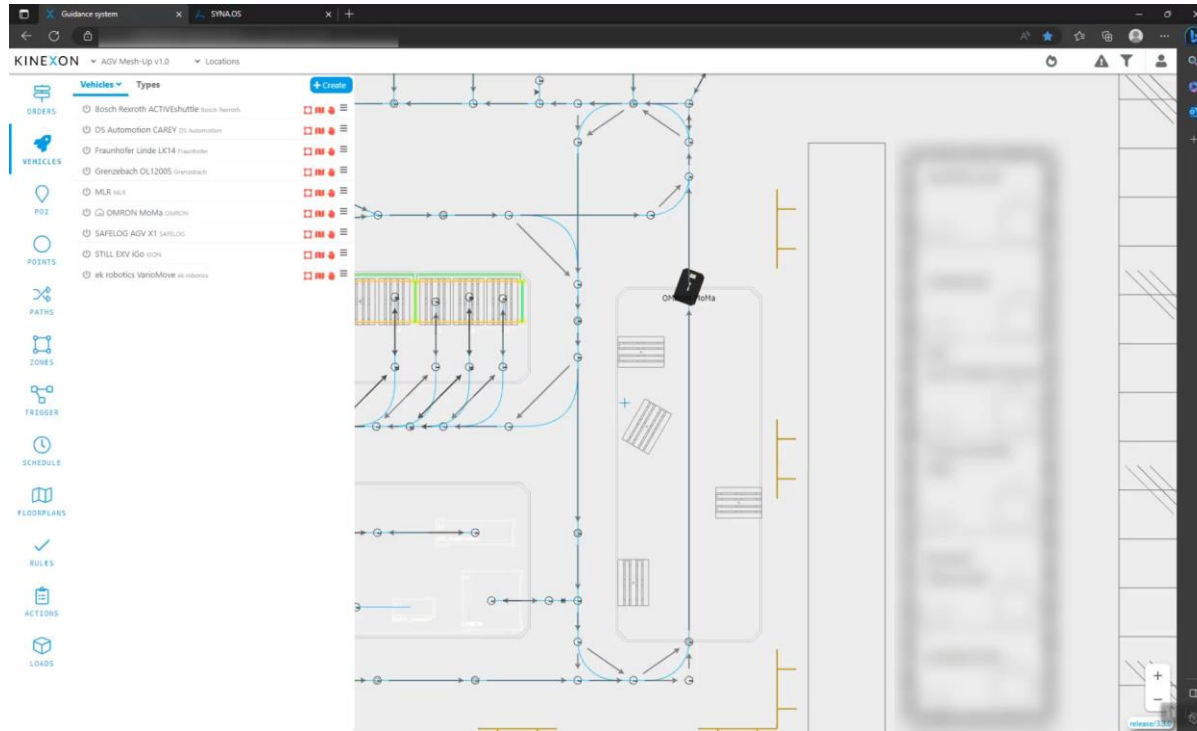
Differentiation comes from software and IT



With ease of integration, ease of use, ease of connectivity, ease of maintenance, etc.

Trend 1: Software/IT over hardware

Interoperability becomes essential for end-users

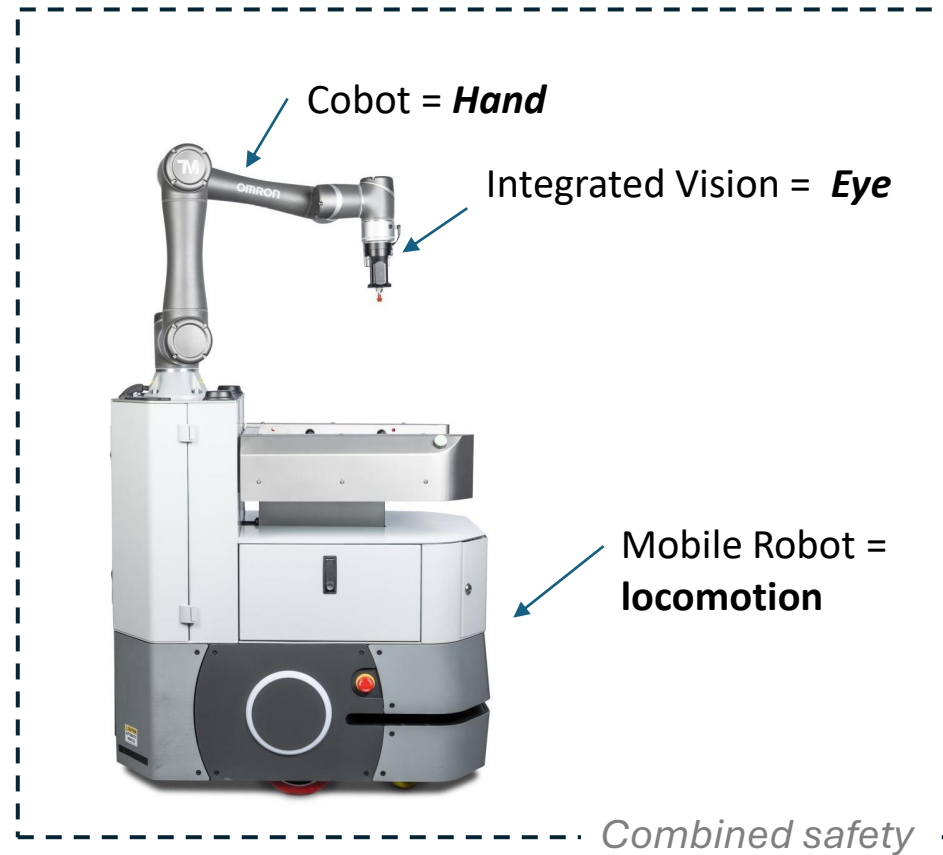


Example of an AMR controlled by 2 VDA master controllers (Kinexon, Synaos)

In particular for AMRs, but not only

Trend 2: Mobile Manipulation

Mobile manipulators are increasingly adopted by end-users



Trend 2: Mobile Manipulation

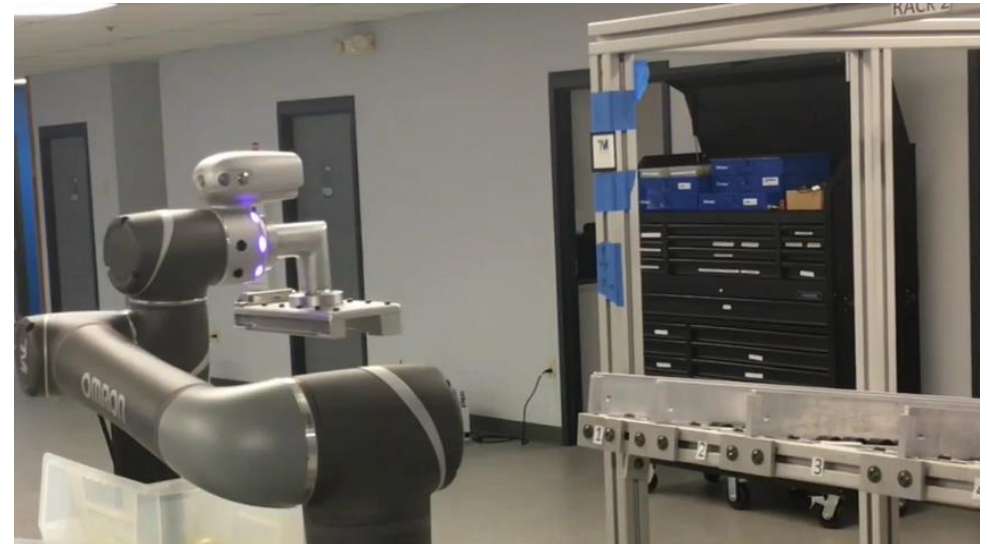
Semi / digital industry

SMIF, FOUP, Cassette, Magazine, Jedec, Retical
Pod Handling



Automotive

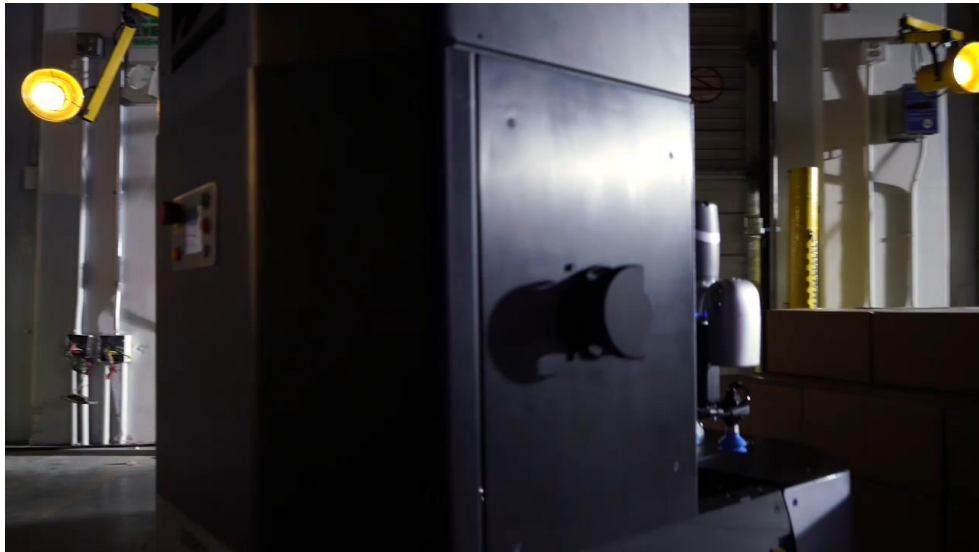
Auto part transfer, Kitting transfer, Machine Tending



Trend 2: Mobile Manipulation

Food & Commodity

3D bin picking, Machine tending, Flexible palletizer, Replenishment Transporter



Medical production

Machine Tending, material transfer, lab automation

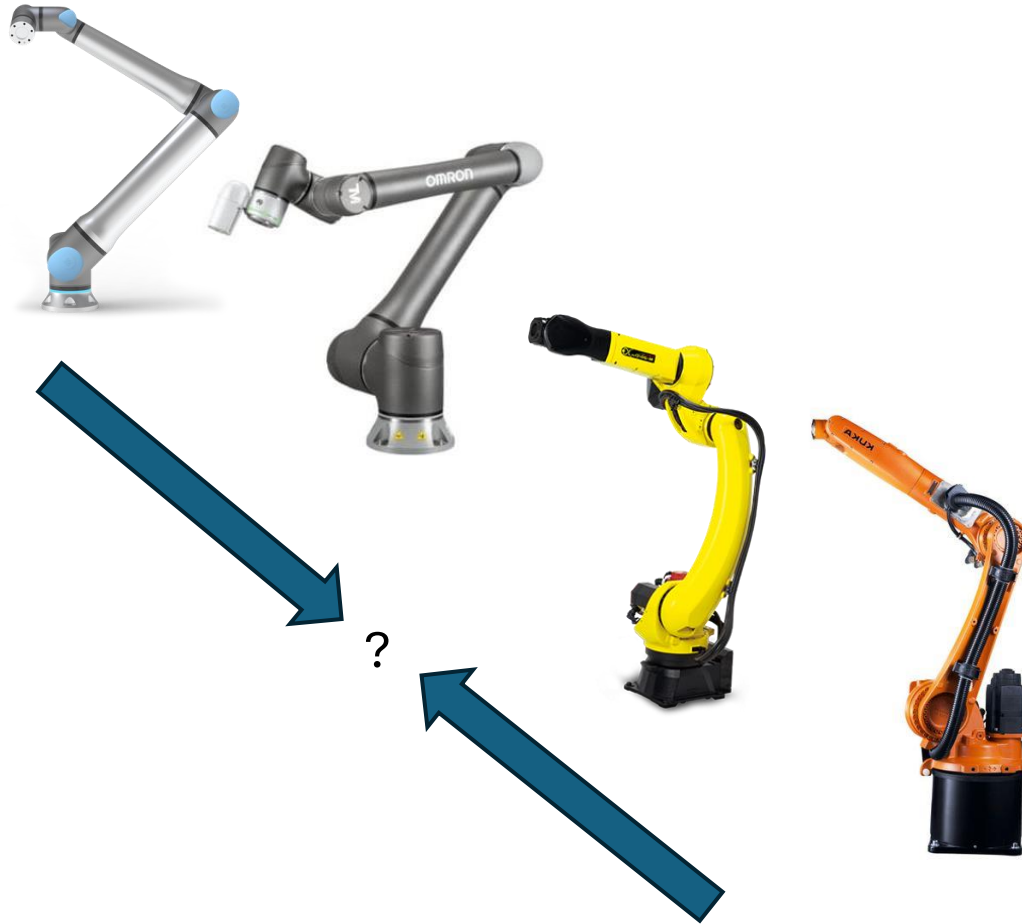




TOMORROW

where is the market headed?

Industrial robots and cobots



Closing the gap

- Bringing speed and repeatability of industrial robots towards robots
- While merging safety architectures between cobots and industrial robots (machinery directive)

Increased harmonization driven by customer needs

- Industrial robots easier to integrate
- Less multiple proprietary languages to be adopted by customers
- Increased usage of AI at the application level
- Increased harmonized connectivity

AMR interoperability

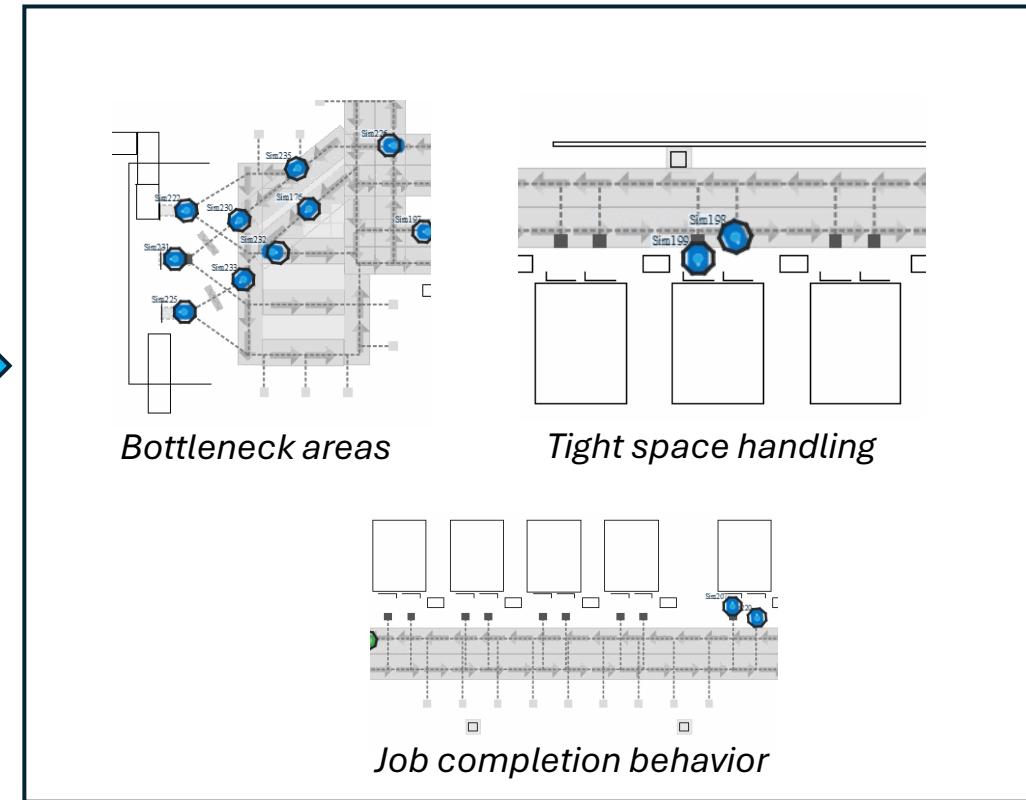
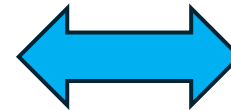
Strong AMR interoperability will be the norm

and yet, it is essential that AMR brands continue to have their own added-value

→ Multi-brand orchestration

→ Advanced intra-brand fleet optimization

→ Advanced navigation



TAKE AWAYS

A blue-tinted photograph of a large industrial factory interior. The scene shows a long, narrow aisle with complex machinery and structural beams overhead. The lighting is bright, creating a high-contrast environment. The overall atmosphere is industrial and modern.

**Integration harmonization,
while keeping proprietary added-values**

**Ease of use
(integration, program, AI, maintain, connect)**

