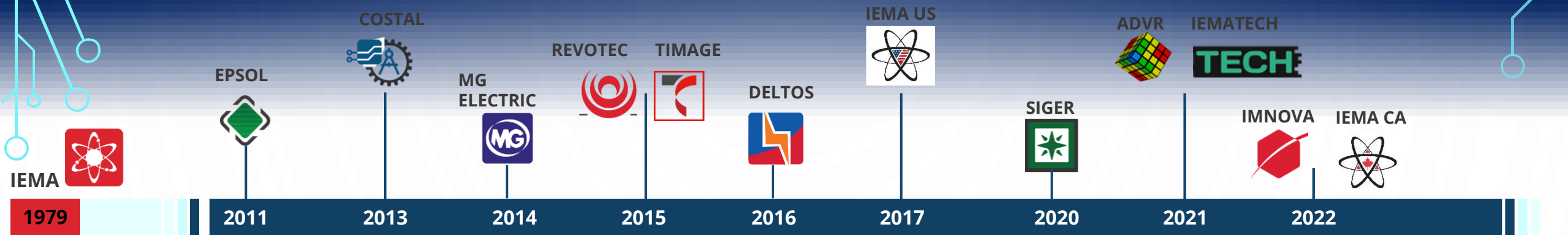
The background features a hand holding a glowing atomic model with a bright yellow nucleus and blue electron orbits. The scene is overlaid with a blue circuit board pattern on the left and right sides, and a series of white concentric circles on the right side. The overall color palette is dominated by blue and white, with a bright yellow-orange glow from the atomic model.

DRIVING THE FUTURE OF INDUSTRIAL AUTOMATION IEMA & HUEVO AT GTFR 2025

MAURIZIO INDOVINI
SOFTWARE DEPARTMENT MANAGER
AT
IEMA

WHO WE ARE: IEMA AT A GLANCE

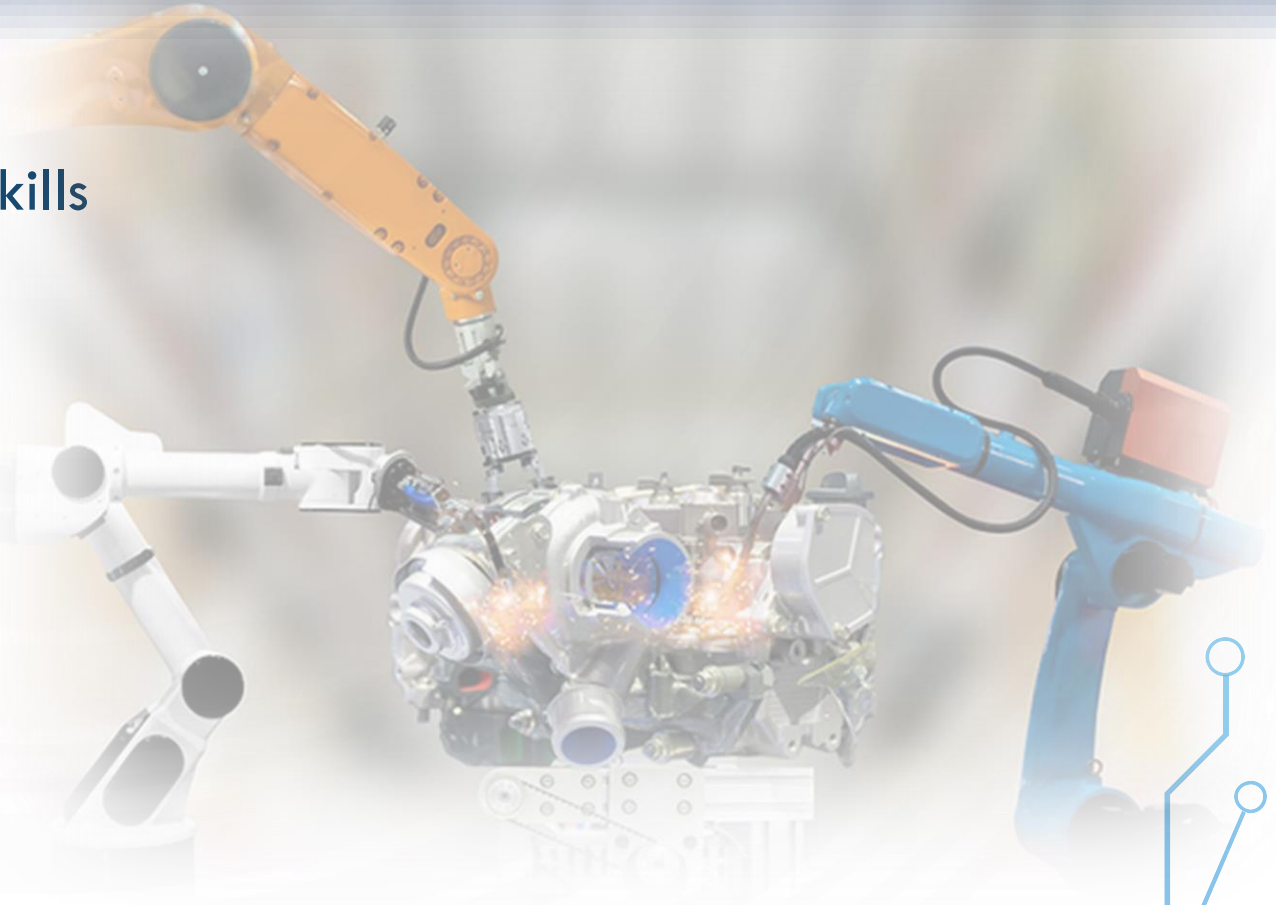


- Founded in 1979, specialized in industrial automation and electrical systems for automatic machinery
- Full-service: design, production, installation, and support
- 420+ active international clients, 25,000+ projects completed
- IEMA group has 800+ employees with expertise in automation and innovation



AUTOMATION LANDSCAPE & CHALLENGES

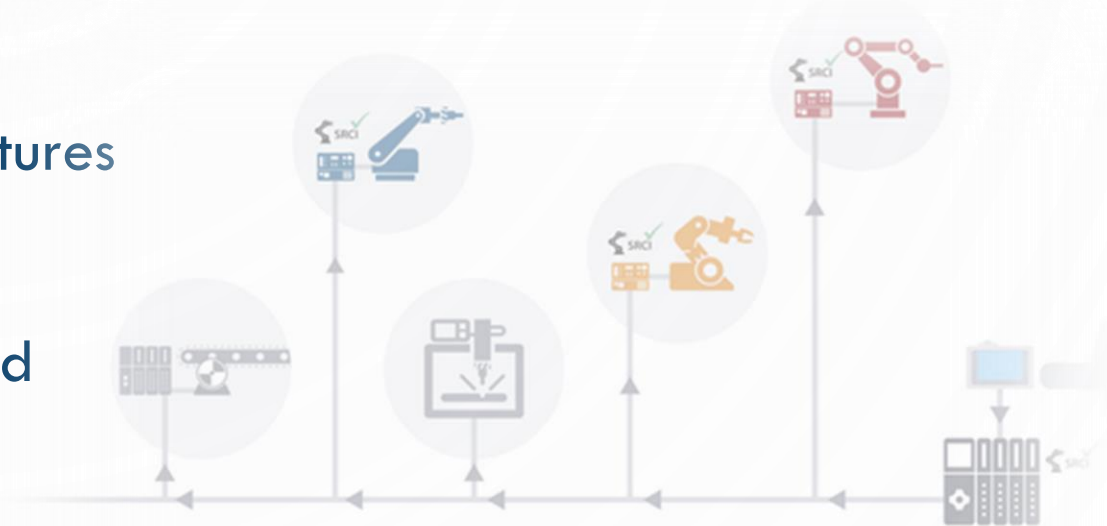
- Talent gap in engineering & digital skills
- Integration & interoperability issues
- Data security and system resilience
- Sustainability and energy efficiency pressures



WHY COLLABORATION MATTERS

GOING BEYOND TECHNOLOGY — THE POWER OF NETWORKS

- ❑ No single company can solve every challenge
- ❑ Open standards and shared architectures accelerate progress
- ❑ Ecosystems enable faster learning and knowledge sharing
- ❑ SRCI as a hub for innovation and dialogue



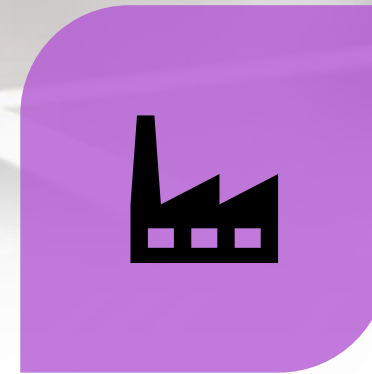
IEMA'S ROLE IN THE SRCI ECOSYSTEM



TRAINING AND
PROFESSIONAL
DEVELOPMENT



PROMOTING STANDARDS
AND BEST PRACTICE



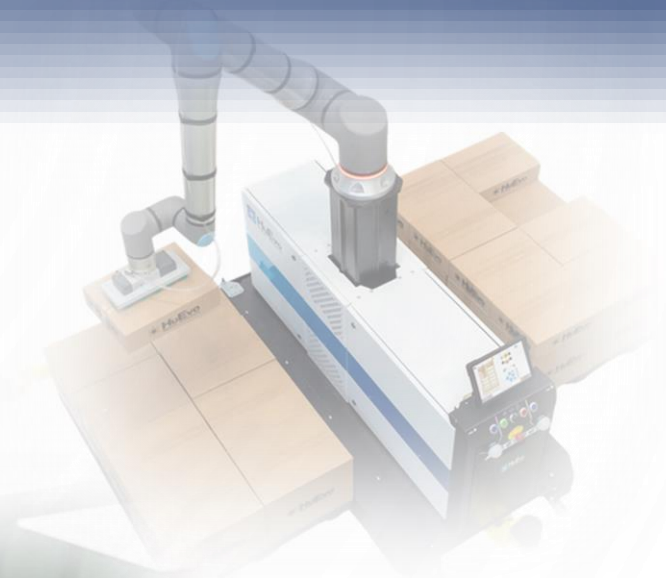
RESEARCH AND
INDUSTRIAL APPLICATION

Cobotics and AI-driven automation systems

Product lines: Palletisers, Harvester, Servant (pick & place)

Modular integration adaptable to existing lines

AI + robotics reduce waste and increase precision



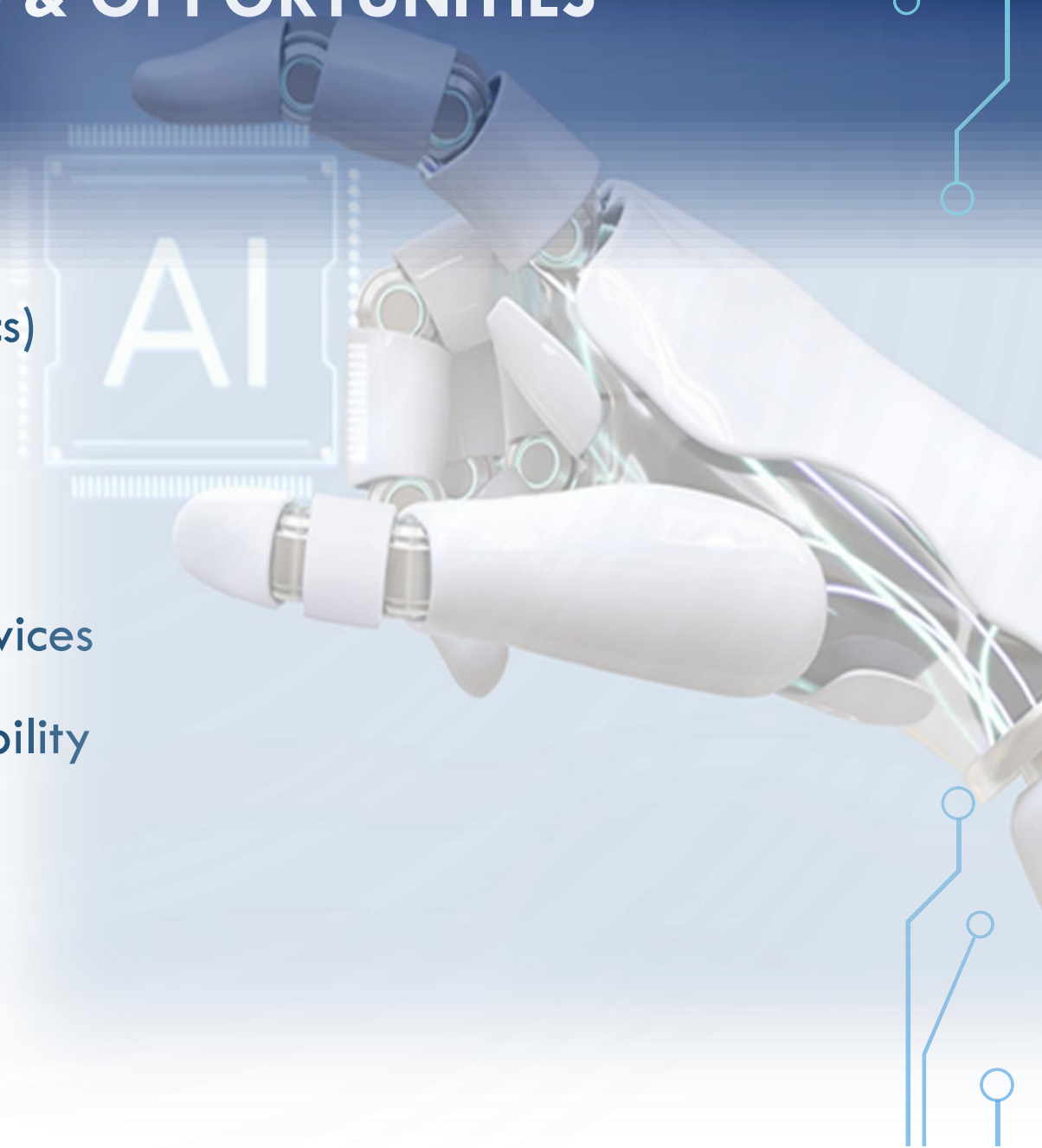
SYNERGIES: HUEVO + SRCI

- IEMA's automation expertise as backbone for HuEvo
- Digital modules enhance and evolve projects over time
- From integrator to enabler of digital transformation
- Data feedback loops guide continuous improvement

 **HuEvo**
Human Evolution

THE ROAD AHEAD: TRENDS & OPPORTUNITIES

- ❑ Human-machine collaboration (cobotics)
- ❑ Edge computing and on-device AI
- ❑ Sustainability as a design constraint
- ❑ Continuous upgrades and lifecycle services
- ❑ Open data ecosystems for interoperability



CALL TO ACTION

Together we can:

- ❖ Raise industry standard
- ❖ Build stronger network
- ❖ Empower the next generation of automation professional

Recap 3 takeaways:

1. Challenges are complex but solvable through collaboration
2. IEMA drives knowledge-sharing and professional growth
3. SRCI is a unique opportunity to move forward together

The top of the slide features a dark blue gradient background. In the corners, there are decorative light blue circuit-like lines with small circles at their ends, resembling a PCB layout.

QUESTIONS?

Thank you for your attention!

I look forward to your questions and discussion

The bottom of the slide features a light blue gradient background. In the corners, there are decorative light blue circuit-like lines with small circles at their ends, mirroring the design in the top corners.