



Home Training courses

Certified PROFINET Engineer

- General Items -
- Home
- Company Information ▶
- Products ▶
- Service and Support
- Fees and Rates
- Certification and Testing
- Training and Education ▶
- Downloads
- Press and Articles
- News Archive ▶
- PROFIBUS FAQ ???
- PROFIBUS GSD Library
- PROFINET GSD Library
- Request information
- Nederland en Belgie -
- Wat is PROFIBUS?
- De Onderneming ▶
- Service en Support
- Tarieven
- Opleidingen / Cursussen ▶
- Evenementen
- Veel gestelde vragen ???
- Verklarende woordenlijst
- Vacatures
- Routebeschrijving
- Informatie aanvragen

This training course will provide detailed technical knowledge of the PROFINET technology and the advantages it offers your automation and production processes. Constantly a comparison with PROFIBUS is made. PROFIBUS is the current standard and PROFINET an interesting enhancement.



PROFINET is using Industrial Ethernet as communication medium, which has lots of myths that are gray areas for users like: *cabling, security, determinism and speed.* But there are more important aspects nobody is willing to answer: *will maintenance activities change?, what happens when the cable has a disturbance?, the solution for process automation, investment costs and how many manufacturers are supplying products?*

This training will take a close peek on these issues so that the participant has confidence to evaluate himself if PROFINET is an appropriate solution for his automation requirements and that he can design a proper application. All subjects will be finalized with a demonstration and practical exercise to get a direct link with the real world.

At the end of the training there will be a theory exam. Participants who pass get the title Certified PROFINET Engineer and are awarded an official certificate.



This event is hosted by the experts of PROCENTEC who are constantly deployed worldwide to carry out projects and training sessions. They can realistically inform you about the advantages and consequences of PROFINET technology.

Subjects

Introduction

- Current PROFIBUS situation.
- Why PROFINET?
- Application areas of PROFINET.

PROFINET Basics

- Device types.
- RT and IRT.
- IO and CBA.
- Addressing.
- Performance and cycle times.
- Proxies.
- Configuration steps.
- GSD files.

Ethernet overview

- Access method.
- Frame structure.
- MAC and TCP/IP address.
- Switches.
- Cabling guidelines for 100 Mbps and 1 Gbps.
- Cable types.
- Connectors.
- Wireless.

PROFINET IO Technology

- Setting Device Names and IP addresses.
- Watchdog.
- Messages.
- Send cycles.
- Hardware and software of a PROFINET device.

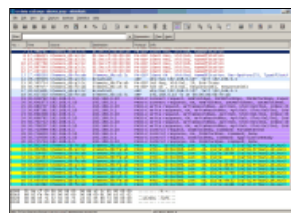
Others

- Certification of devices.
- Available tools.
- PROFINET versus other Ethernet systems.
- Cost comparison between PROFINET and PROFIBUS.
- Peek in the future.

Exercises

- Assembling connectors.
- Configuring switches.
- Analysing messages.
- Configuring a PROFINET installation.
- Integrating a PROFIBUS segment.

Target audience



This course is intended for everyone who has to understand the theoretical and practical aspects of PROFINET. For example:

- Advisors and consultants.
- System integrators.
- Project leaders.
- Programmers.
- Hardware engineers.
- Installers.
- Suppliers.
- Teachers.

Prerequisites

There are no prerequisites for joining the course, however it's recommended that the attendee has knowledge about the following:

- Terms which are common in the industrial automation (PLC, remote I/O, etc.).
- Terms which are common in electrical engineering (resistance, voltage, etc.).
- Familiar with Binary and Hexadecimal representations.
- Capable of working with Windows XP.

Details

Training methodology: **Theory + practical exercises**

Duration: **3 Days (10 AM - 5 PM)**

Price: **€ 1800,- per person**

Data	Location	Country	Language	Remarks
17 to 19 March 2008	Wateringen	Netherlands	English	
12 to 14 May 2008	Manchester	UK	English	

Other information

The participants will receive: *a course book, CD-ROM, writing materials and a certificate* (after passing the exam).

It is advised to bring a laptop with an Ethernet port and if possible with Step 7 5.3 or higher installed.

A lunch is included on all course days.

For more information about this training contact: Dennis van Booma (dbooma@procentec.com).



Downloads & Links

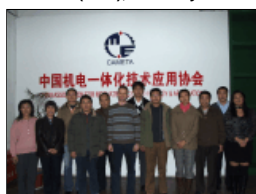
- [Registration form: 'Certified PROFINET Engineer'](#)
- [List of Certified Engineers](#)
- [Hotel information](#)
- [Hotelinformatie](#)



Dubai (UAE), February 2007



Beijing (China), March 2007



Beijing (China), December 2007